



Robotic Applications in BioMedicine: From Molecular Imaging to Heart Surgery

Medical Robotics Laboratory, PGH 315

Department of Computer Science

<http://mrl.cs.uh.edu/Home.html>

Nikolaos V. Tsekos

**Junmo An, Nicholas von Sternberg, Giulia Toti (*),
Habib Zaid, Mahmut Unan**

PhD: Nikhil Navkar, Ahmet Sonmez, Erol Yenziaras, Fabien Benoteau,

MS: Johann Lamaury, Yousef Hedayati, Daniele Faris

BSc (BME): Habib Zaid

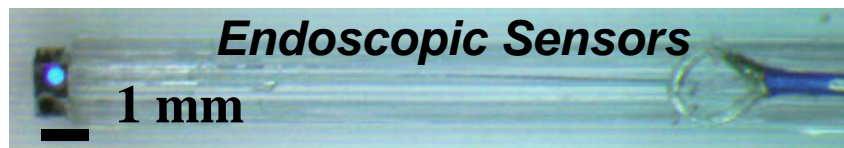
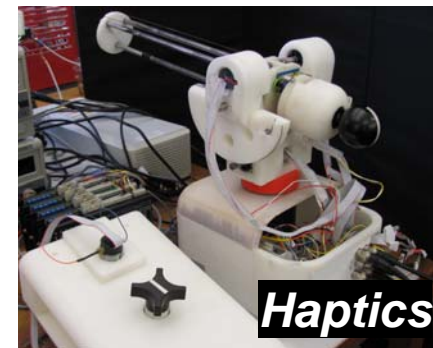
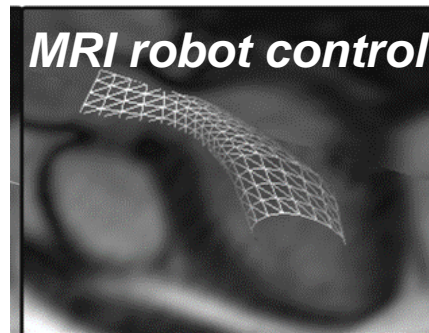


What do we do?

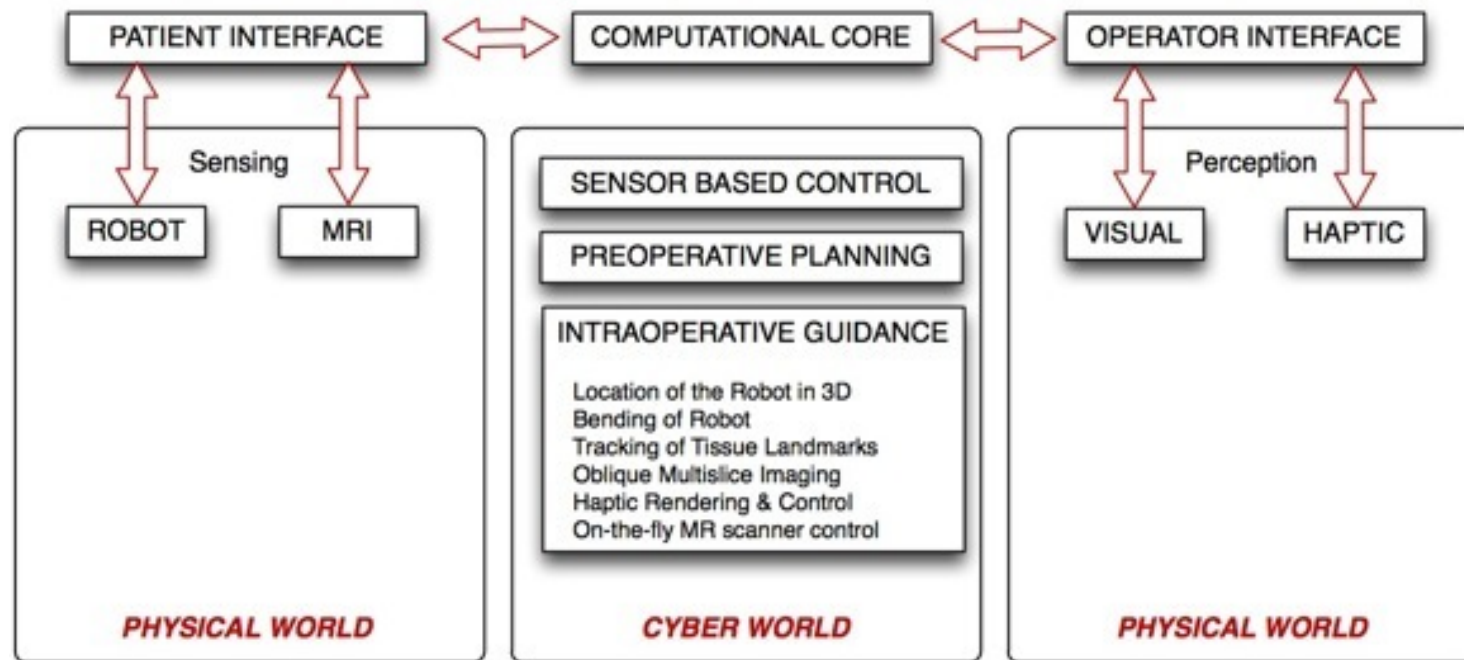


Develop computational methods and hardware, and integrate them for performing image-guided and robot-assisted interventions and surgeries ...

From Concepts to Actual Working Prototypes!



MIROS: A Cyber-Physical System Built from the Ground Up in Our Department!

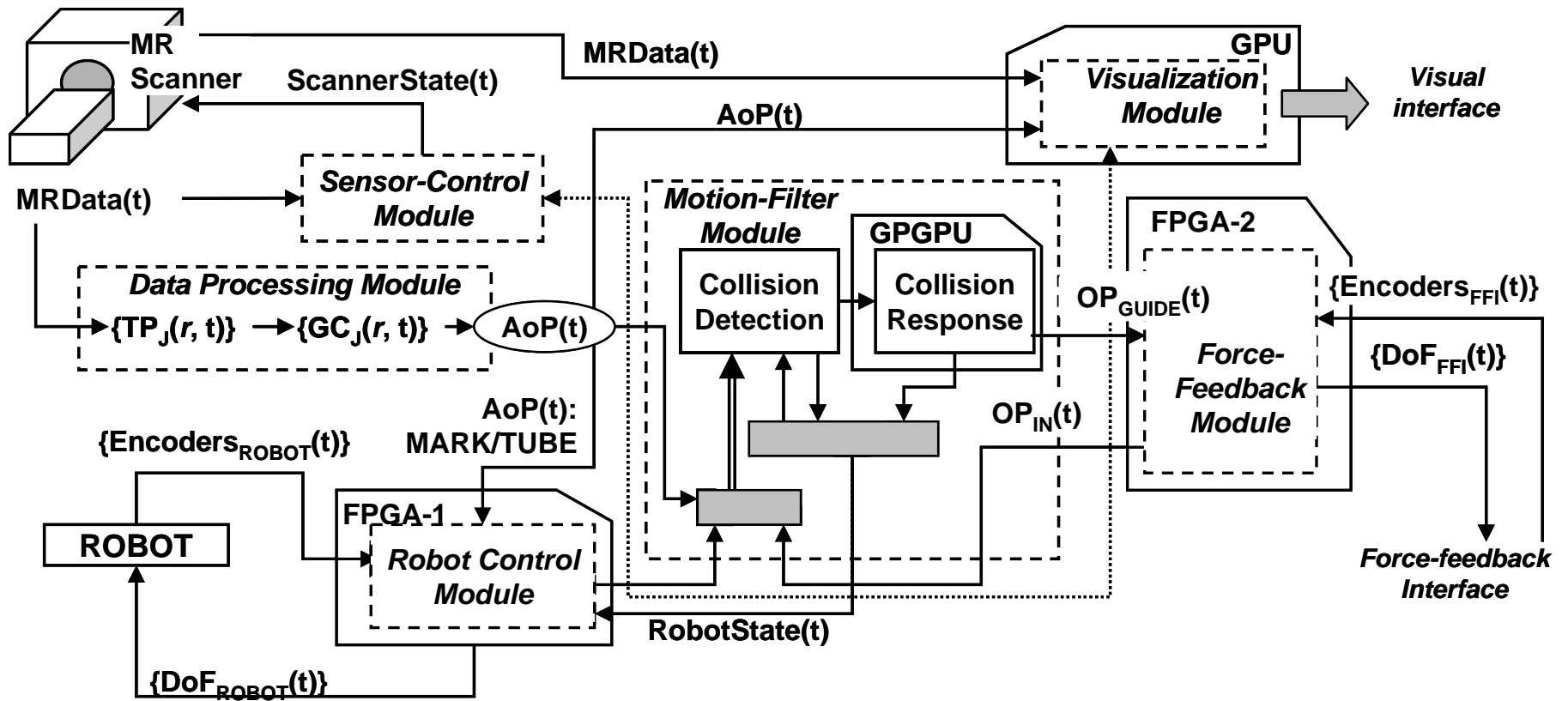


We bridge and link the physical and the cyber world

MIROS

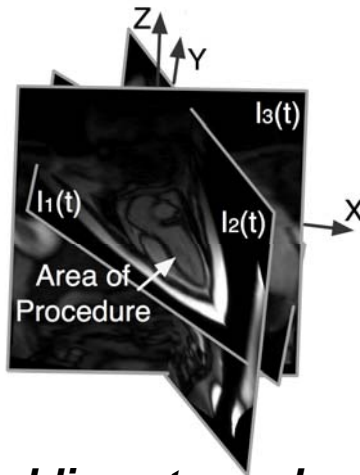


Multimodal Image-guided RObot-assisted Surgeries



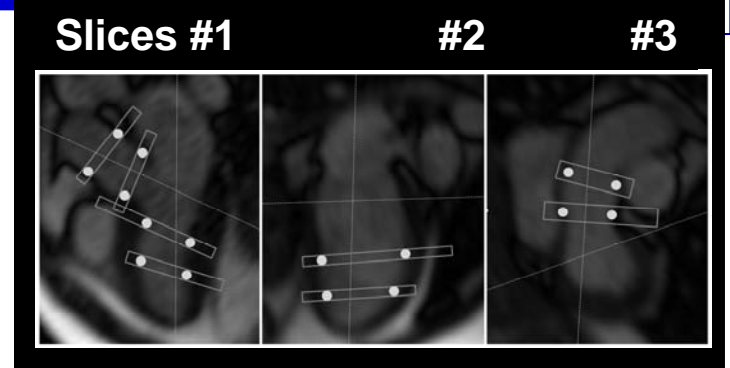
Computational Thread: Processing

Dr. N. Navkar

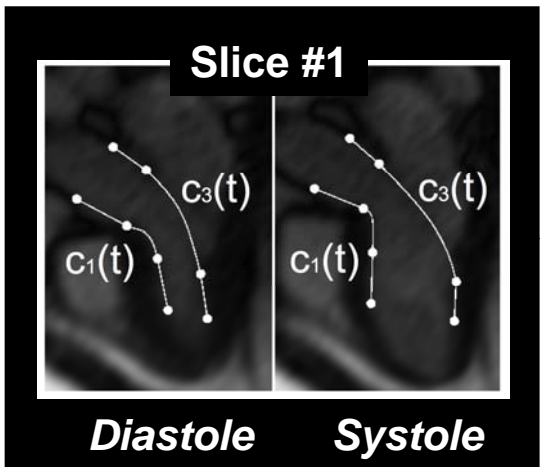


Three oblique-to-each-other slices: 49 ms/slice (20 Hz)

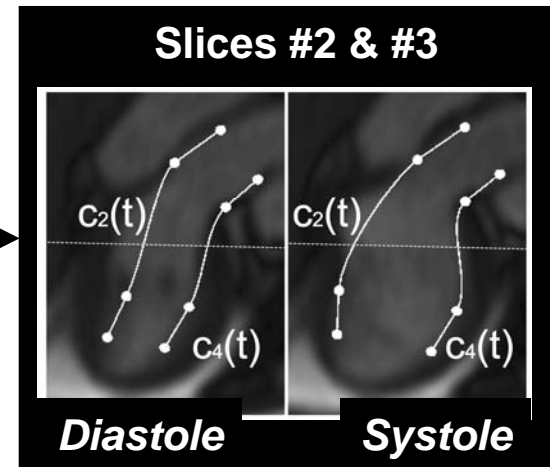
Real-time MRI feed



Projection Bands



Control Curves



Force Feedback Interface

Dynamic Virtual Fixtures

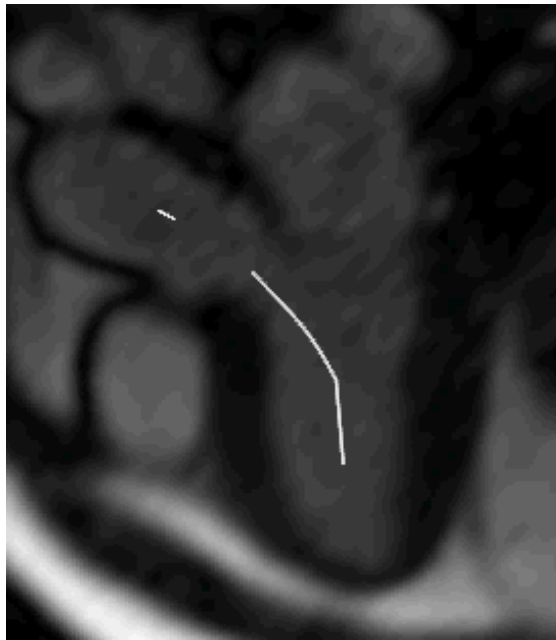
Visual Interface

Cardiac Surgeries (Fast-fast-fast!!!)



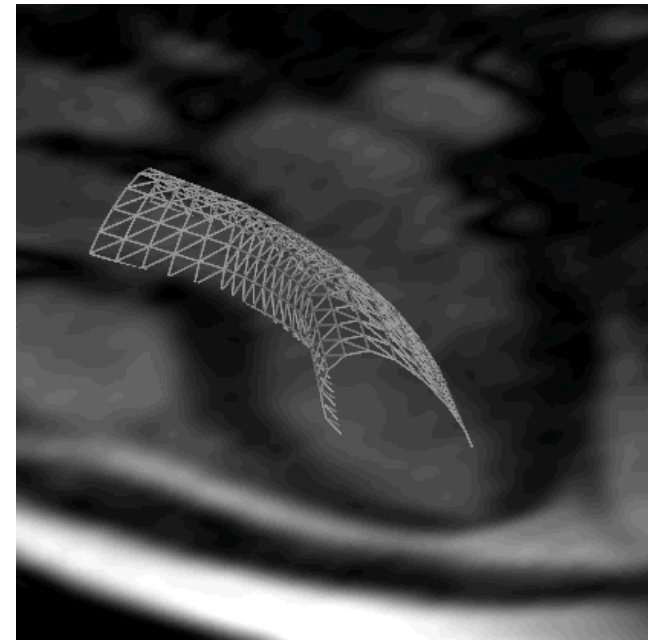
Virtual Fixtures Generated *On-the-Fly* from the Continuous Feed of the Real-time MRI

Guidance Virtual Fixtures



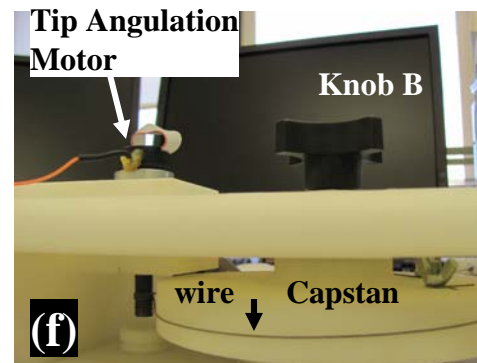
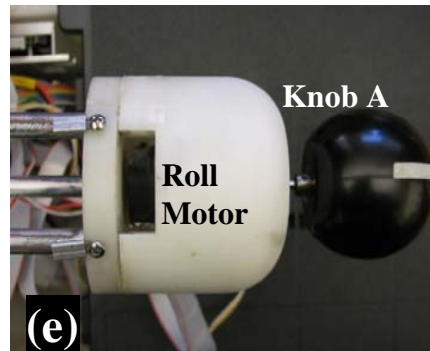
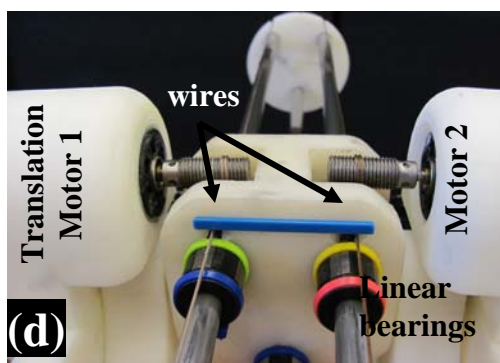
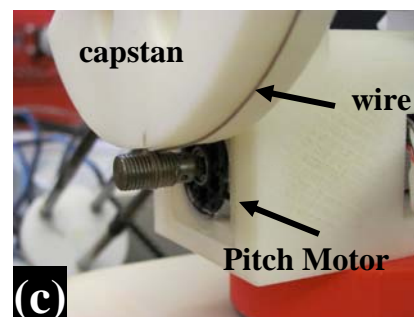
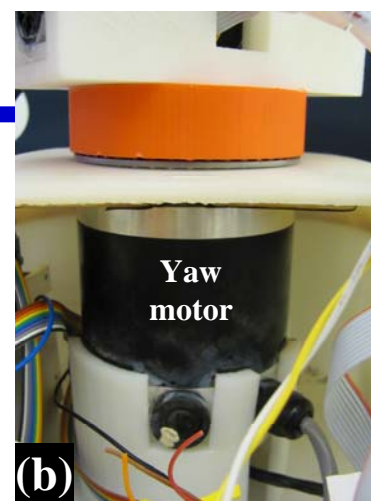
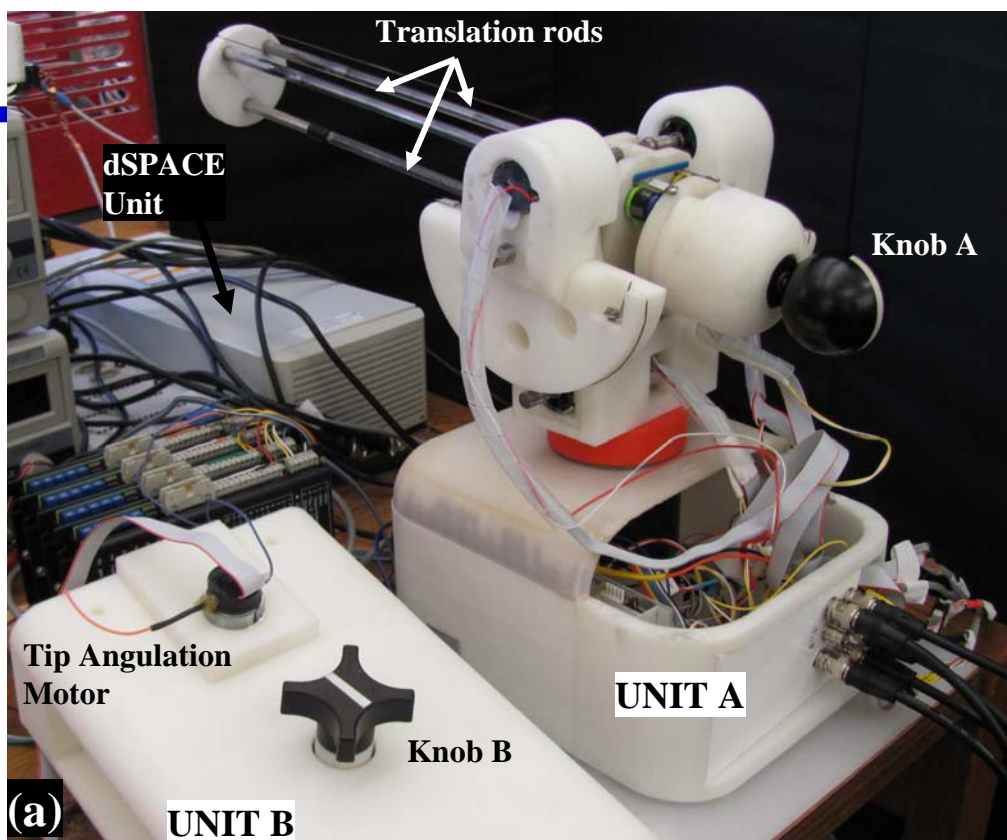
Maneuver on the curve

Forbidden Region Virtual Fixtures



Maneuver inside the corridor

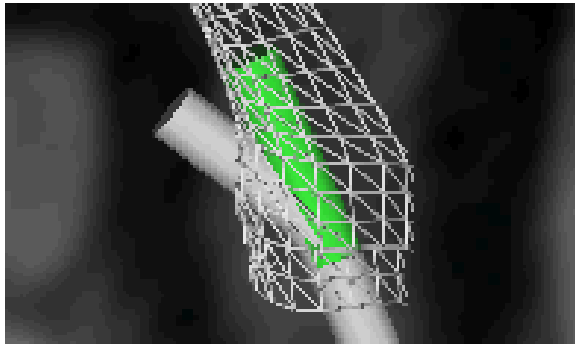
NO NEED for Models, Assumptions and unnecessary computational layers!



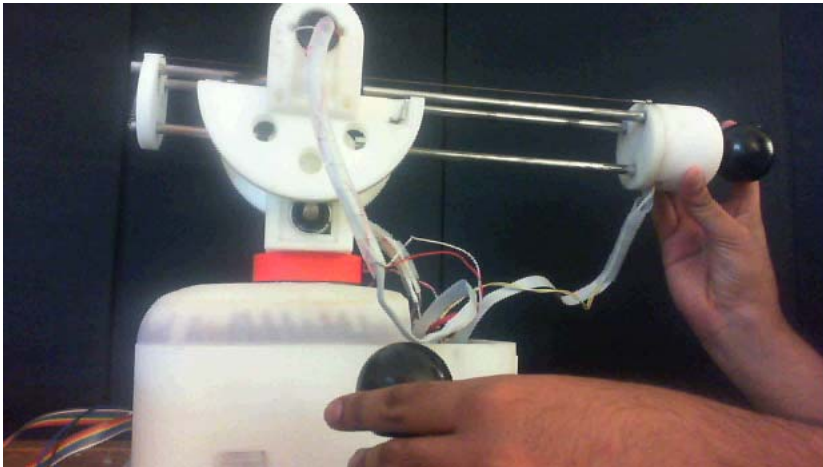
Enhanced Reality and Haptics



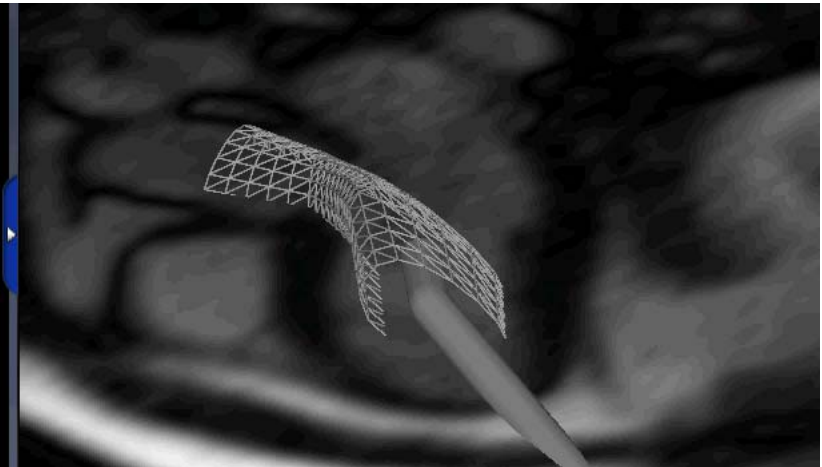
Dr. N. Navkar & Dr. E. Yeniaras



- The forces exerted on the operator direct the actual robot (gray) to match its proxy (green)
- The proxy is calculated to stay always inside the forbidden region corridor



**Force-Feedback Interface
(In-house developed 5 DoF)**



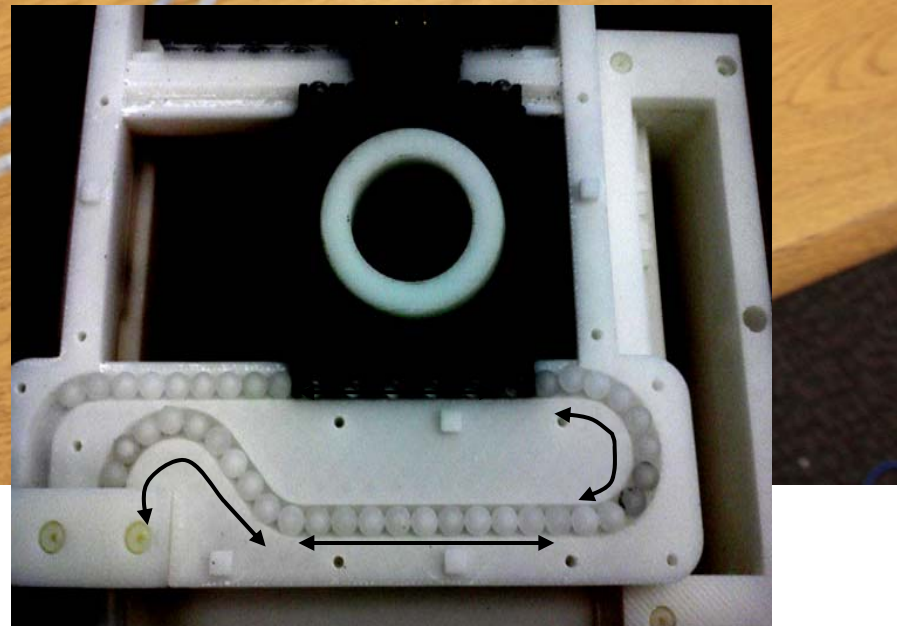
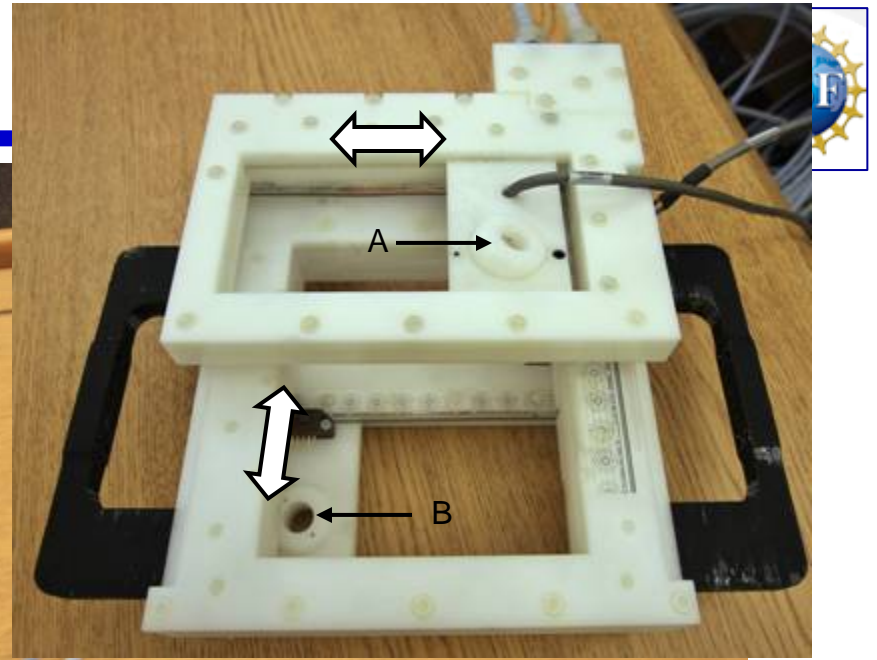
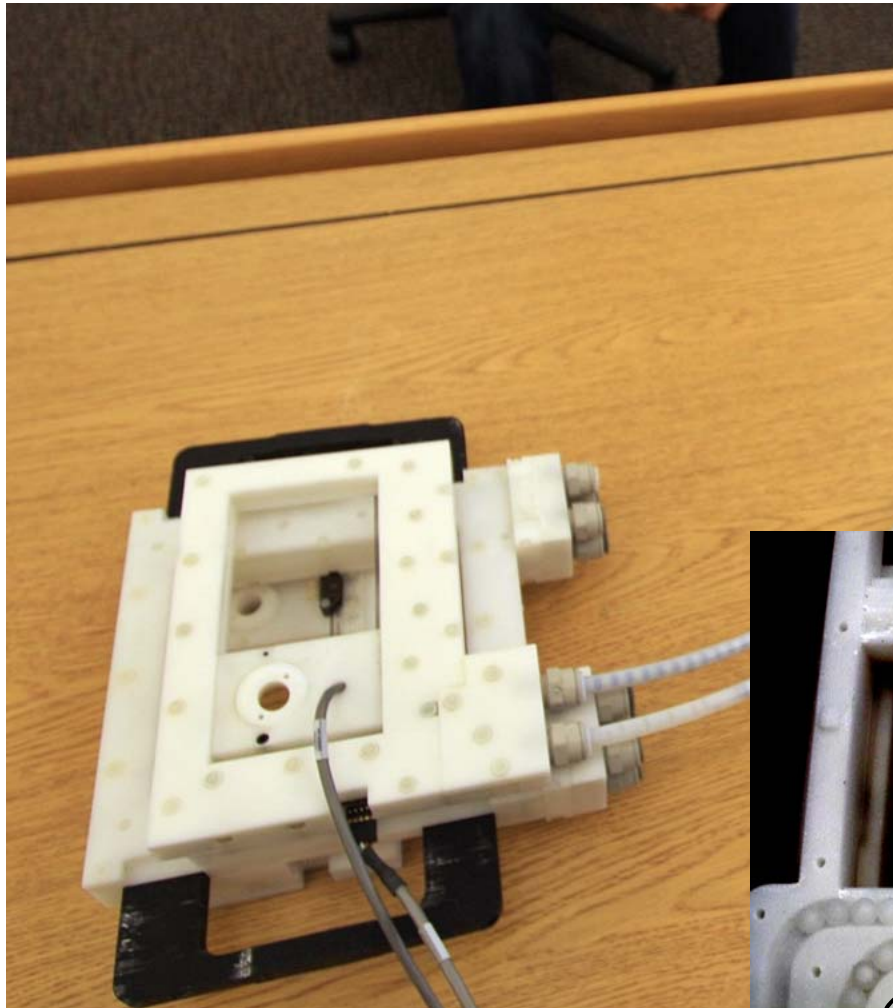
**Visualization Interface
(High Definition LCD)**

In-house Developed MR-compatible Robot



N. Sternberg (PhD); H. Zaid, BSBME; J. An (PhD)

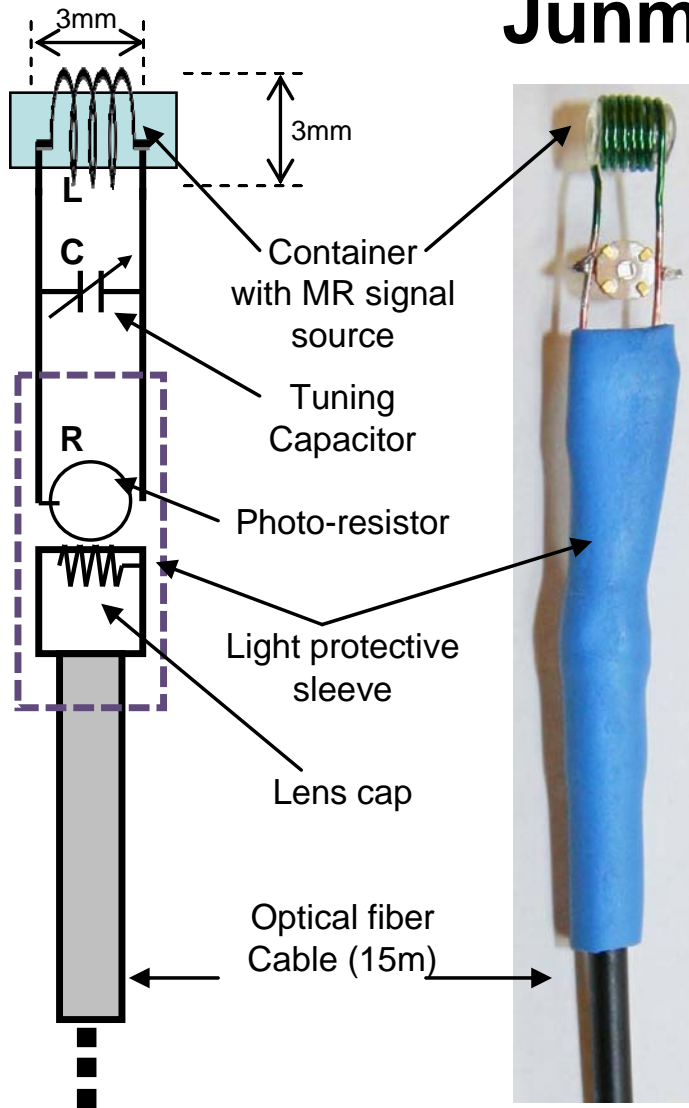




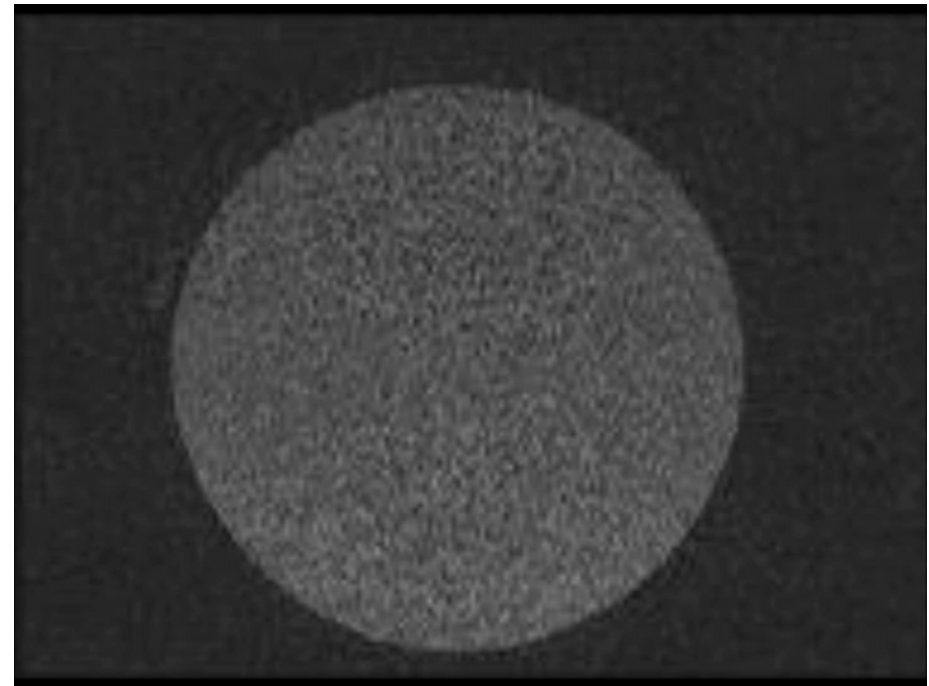
Tracking A Robot With MRI



Junmo An (PhD)



**Robot Controls which markers
are MR visible!**
-Faster
- Less Computing!

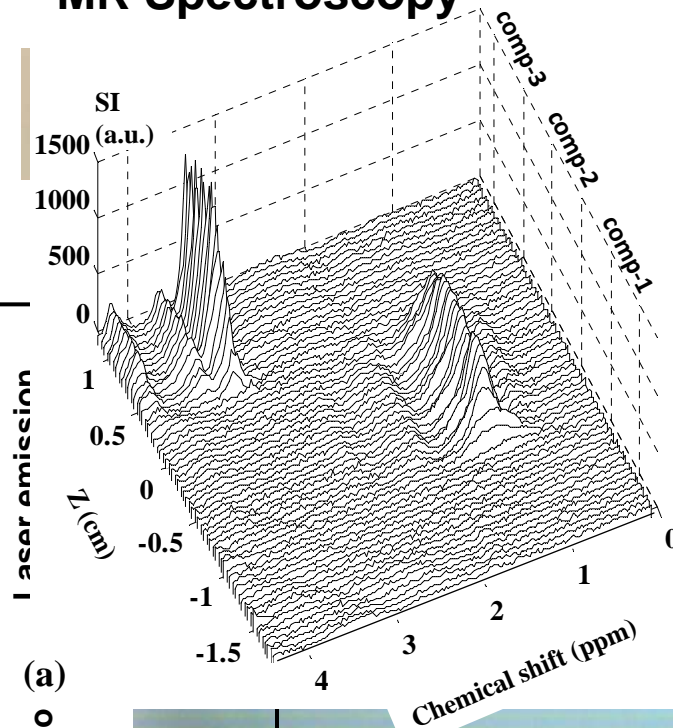


The MRI+Optical Needle Probe

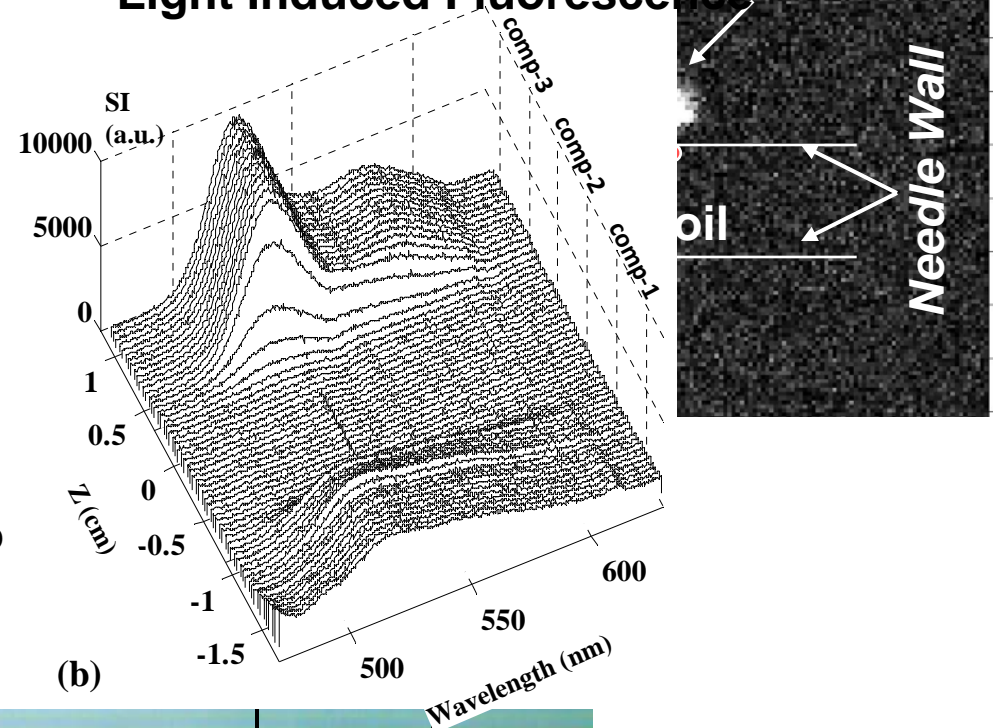


Dr. Ahmet Sonmez

MR Spectroscopy

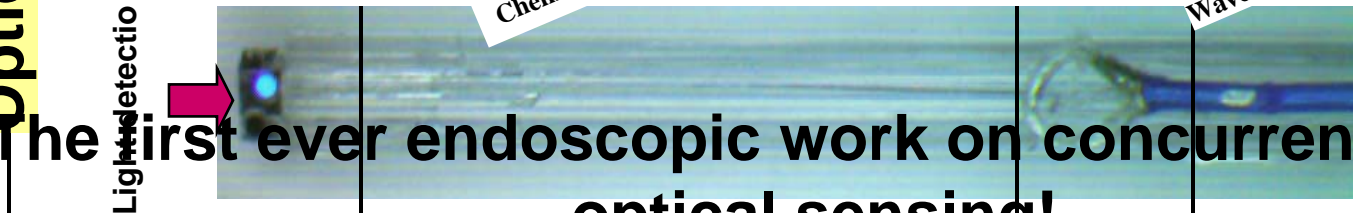


Light Induced Fluorescence



Optical Sensor

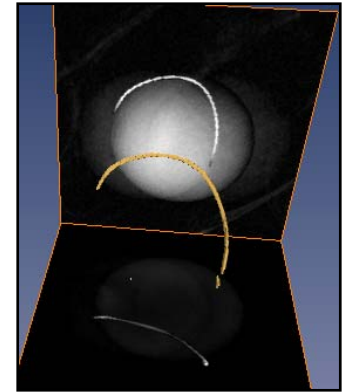
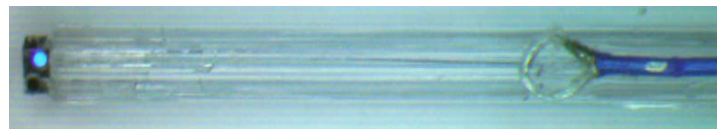
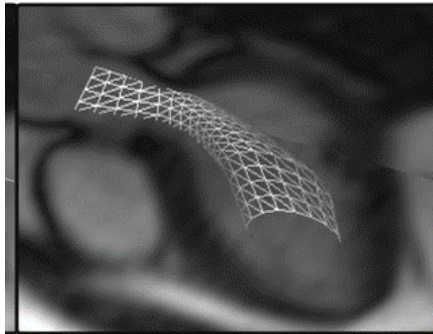
Light detection



The first ever endoscopic work on concurrent MRI and optical sensing!



Thank you!



**E-mail: ntsekos@cs.uh.edu
Visit us at *PGH 315***

Medical Robotics laboratory CS@UH

